

# Analysis of Global Warming

<sup>[1]</sup> Athulya Krishna

<sup>[2]</sup> Jinson Devis

<sup>[1]</sup> PG Scholar, Amal Jyothi College Of Engineering, Kanjirapally

<sup>[2]</sup> Assistant Professor, Amal Jyothi College Of Engineering, Kanjirapally

<sup>[1]</sup> [athulyakrishna2022@mca.ajce.in](mailto:athulyakrishna2022@mca.ajce.in)

<sup>[2]</sup> [jinsondevis@amaljyothi.ac.in](mailto:jinsondevis@amaljyothi.ac.in)

**Abstract-** One of the major environmental issues: Global Warming has its own set of consequences is growing day by day. Many people are expressing huge concerns about diversity in the overall climate of Earth. Gasoline is being continuously used to produce electricity. The flaming process of these fuels emits gases like carbon dioxide, methane and nitrous oxides which contribute to this cause. The effects of climate changes are already in action, and resulting in damage everywhere. Along with this, desertification is also leading to high temperatures.

We are already undergoing some of its contemptuous effects. It will severely affect environment and disturb ecological balance. Due to these unreliable effects of global warming, some solutions must be devised. This paper introduces global warming, elaborates its causes and hazards and presents some visualization of global warming in the world.

**Keywords:** Global warming analysis, visualization, reports.

## I. INTRODUCTION

Global Warming is the phenomenon that increases at intervals the common for semi permanent temperature of the Earth's climate system. Warming happens when the greenhouse gases occupy sunlight and solar radiation has reflected from the earth's surface. For that the air of the earth is increasing and eventually then overall inversion of earth is also growing. This describes of the earth warming is deadly. Per the IPCC latest report, the foremost drive of earth warming is that grow in concentration of acid gas within the atmosphere .The common scientific concurrencies that the earth is warming. Over the past century, the temperature has already climbed zero point five degrees Celsius. The "warming of the weather is unmistakable", with the last decade being the cozy decennium since 1850. However there is whist discussion over if warming is essentially

occurring, and if it is, then if it is evolution. A majority, about 51%, of people at intervals the USA don't believe evolution world temperature change, with thirty first of those personal expression the warming is natural, and two hundredth expression the warming is not occurrence . With the USA being the sole real country out of 196 within the national organization to not sign the Paris Agreement, a commitment to international world temperature change, it's clear that there are still many of us within the earth that deny international world temperature change is caused by humans or is even occurring the tiniest block.

## II. MACHINE LEARNING ALGORITHMS

Machine learning (ML) is that the study of system algorithms which will improve automatically through expertise and by the use of data. There are two major types:

- a. Supervised learning
- b. Unsupervised learning

Supervised learning, an algorithmic program is created to find out to map and input to a definite output. This can be done by tagged datasets that are collected over the course of your time. Supervised learning is categorized into two types-: Regression and Classification.

In unsupervised learning have 2 methods- principal element and cluster analysis. The most purpose of this model is to predict, Classify, detect segmentation and the most common use of machine learning is analysis recognition, image analysis , information retrieval, data compression and computer graphics.

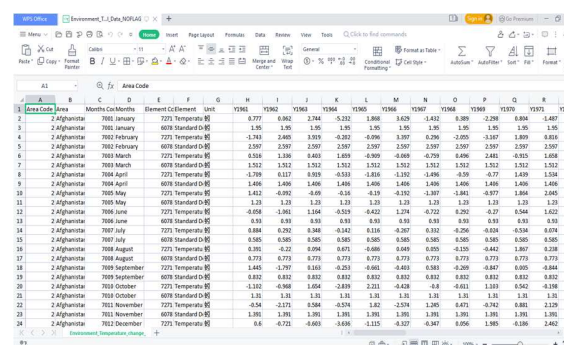
DOI: 10.5281/zenodo.6369811

ISBN: 978-93-5607-317-3@2022 MCA, Amal Jyothi College of Engineering Kanjirappally, Kottayam

a) **Data Collection:**

Here, we fetch data from completely inconsistent information set. Then the info set is modified as per requirement. This information cannot be expected directly. So, it's required to scrub and pre-process. The information within the datasets area unit as follows:

SNO.	Attributes
1	Area code
2	Area
3	Months code
4	Element code
5	Temperature
6	Standard Deviation



In these steps the data is cleansed. The data is grouped as per demands.

c) Data analysis and processing

In this step, the pre-processed data is taken for the analysis and these data can be processed.

- DOI: 10.5281/zenodo.6369811  
ISBN: 978-93-5607-317-3@2022 MCA, Amal Jyothi College of Engineering Kanjirappally, Kottayam

#### d) Result

##### Countries Visualization

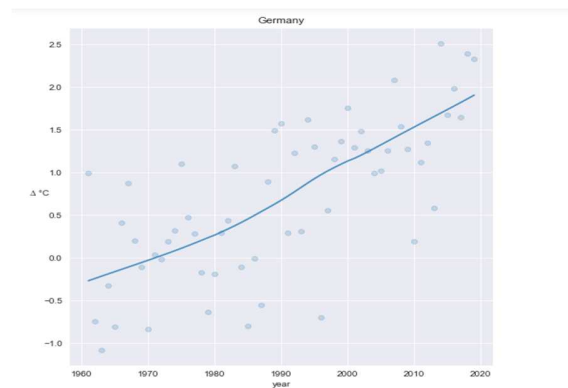


Figure 1: Germany

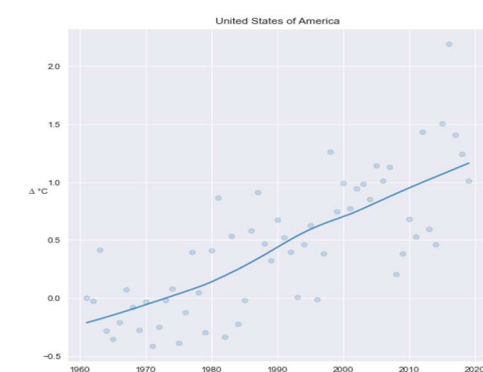


Figure 2: America

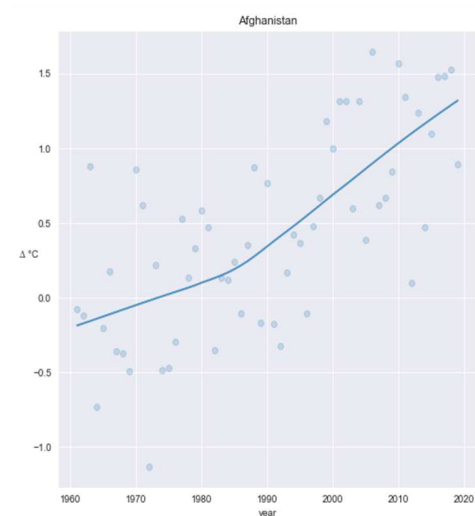


Figure 3: Afghanistan

As expected we see a clearcut increase in temperature over the years in our sampled countries.

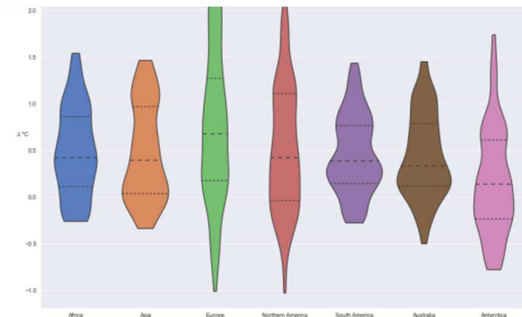


Figure 4: Continents Visualization

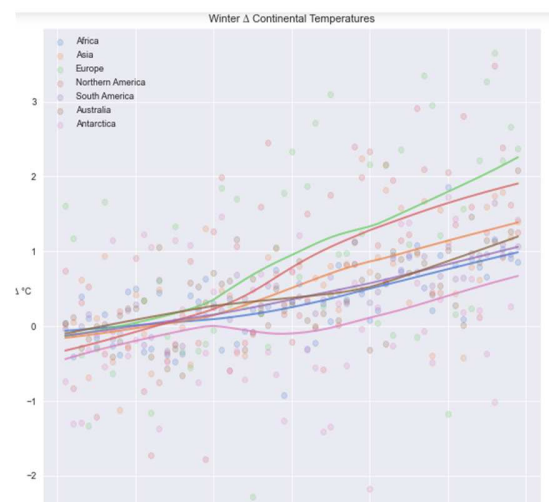


Figure 5: Continental Temperature

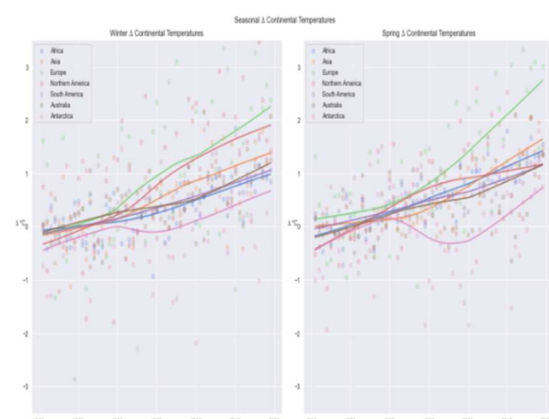


Figure 6: Seasonal Temperature

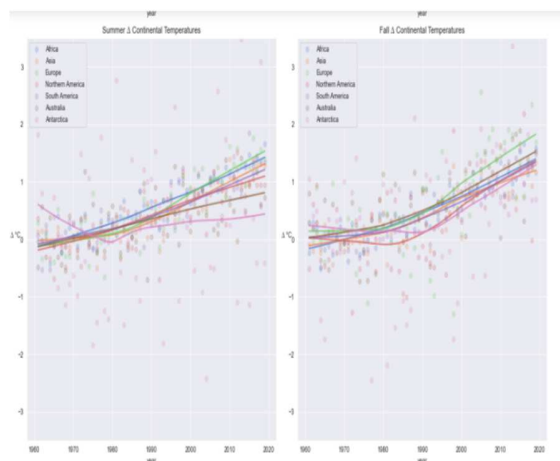
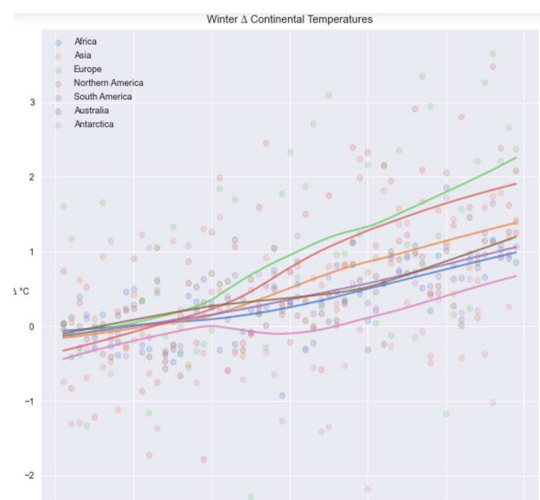


Figure 7: Seasonal Temperature

#### IV. CONCLUSION

In the analysis of global warming as expected we see a clear-cut increase for the world as a whole. Although the degree of increase varies between continents, it's clear that all have seen increasing temperatures in all seasons. Most appear to be consistently above 1°C in recent years. It has been oft determined that affluent countries have benefited disproportionately from the activities that have caused warming, whereas poor countries suffer disproportionately from the impacts. Our results show that, in to boot to the direct benefits of fuel use, many affluent countries have on the face of it been created even extra loaded by the warming.



#### V. REFERENCES

- [1] "Prediction of the on the face of it impact of activity on monthly mean most and minimum temperature inside the Chaliyar geological region, India, using ANN- based models" by N.R. Chithra, S.G. Thampi, S. Surapaneni, R. Nannapaneni, A.A.K. Reddy, J.D. Kumar; Theoretical and Applied Climatology (Vol – 121); Aug-2014
- [2] "Big knowledge and Climate Change" by H. Hassani, Xu Huang and E. Silva; Feb-2019
- [3] IPCC, 2007(a): Climate Change 2007: Effects, Adaptation and vulnerability. Contribution of unit II to the 4th Assessment of the Intergovernmental Panel on inversion change. M.L. Parry, O.F. Canziani, J.P. Palutikof, P.J. van der Linden and C.E. Hanson (Eds.)
- [4] Intergovernmental Panel on Climate Change (2012) Managing the Risks of Extreme Events and Disasters to Advance Climate Change Adaptation, ed Field CB, et al. (Cambridge Univ Press, Cambridge, UK).
- [5] Milanovic B (2016) Global Inequality: A New Approach for the Age of Globalization (Harvard Univ Press, Cambridge, MA).